

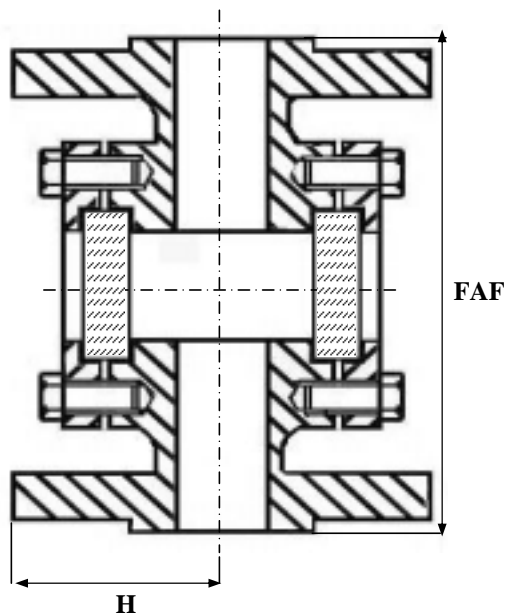
CONTROLEUR DE CIRCULATION

FONTE

BRIDES

ISO PN16

| | |
|----------------------------|--------------|
| CORPS / BODY | FONTE |
| BRIDES / FLANGES | FONTE |
| VERRE / SIGHTGLASS DISC | BOROSILICATE |
| JOINT / SEAL | FIBRE |



TEMPERATURE MAXI SERVICE 180°C

REF : 280 101

PRESSION MAXI DE SERVICE 16B

LE RAPPORT PRESSION/TEMPERATURE
EST A DEFINIR PAR NOS SOINS

SOUS RESERVE DE MODIFICATIONS

| D | 8 | 10 | 15 | 20 | 25 | 32 | 40 | 50 | 65 | 80 | 100 | 125 | 150 | 200 | 250 | 300 | 350 | 400 | 500 | 600 | |
|-------|-----|-----|------|------|------|-------|-------|------|-------|------|-----|-----|-------|-----|-----|-----|-----|-----|-----|-----|--|
| N | 1/4 | 3/8 | 1/2 | 3/4 | 1 | 1 1/4 | 1 1/2 | 2 | 2 1/2 | 3 | 4 | 5 | 6 | 8 | 10 | 12 | 14 | 16 | 20 | 24 | |
| FAF | | | 130 | 150 | 160 | 180 | 200 | 230 | 290 | 310 | 350 | 400 | 480 | 600 | 730 | | | | | | |
| | | | 47.5 | 52.5 | 57.5 | 70 | 75 | 82.5 | 92.5 | 100 | 110 | 125 | 142.5 | 170 | 202 | | | | | | |
| H | | | | | | | | | | | | | | | | | | | | | |
| MASSE | | | 4.1 | 4.2 | 4.2 | 8.1 | 8.5 | 11.5 | 23 | 23.5 | 36 | 47 | 65 | 80 | 94 | | | | | | |

19 rue Albert Thomas 44600 SAINT NAZAIRE - FRANCE

TEL : 02.51.10.18.18 FAX : 02.51.10.18.19

www.societe-gmi.com

REV .05

PAGE F370